

# **SURGEX** **CONNECT**



Cloud-based software that empowers AV integrators to remotely **Control, Monitor, and Manage** individual or a fleet of devices.

## **What is SurgeX CONNECT?**

SurgeX CONNECT streamlines multi-site power management into a cloud-based, intuitive, and secure dashboard that allows integrators to easily take control of their installations' power quality - **anytime, anywhere!**



Its intuitive and secure platform enables integrators to remotely monitor, toggle, reboot, and control outlets and devices, empowering them to meet power quality requirements across project sites confidently. The interface delivers a consistent, high-quality experience, leveraging its robust connectivity, comprehensive device management, remote monitoring, and advanced analytics from SurgeX's most trusted power protection technologies.

## Device List

A single screen, with a simplified view, where all devices can be sorted, filtered, and searched.



# SURGEX CONNECT

## FULL FUNCTIONALITY



## Fleet Management

- Device List:** Sort, search, and filter a list of your fleet of connected devices, viewing critical information for efficient fleet management.
- Notifications:** Access a single view of all time stamped notifications from your fleet of connected devices, which is sortable, searchable, and can be exported for further analysis.
- Site Admin:** Create sites and site locations that can be assigned to your devices.
- User Admin:** Create users and assign privileges that can later be assigned to devices.
- Device Management:** Assign sites, users, and set up email alerts for individual devices.



## Device Details

Monitor the relevant power analytics for an individual device, review time stamped events, historical power analytics, and much more.

## Individual Devices

- Power Management:** Turn on, off, or power cycle outlets/banks (device dependent) or the entire device.
- Device Status:** Review power analytics and other information.
- Events:** Generate a list of time stamped alerts that can be filtered by date ranges.
- Historical Data:** A graph of time stamped power analytics that can be exported for further analysis.
- Settings:** Set thresholds and other device related information.
- Sequences:** Create and modify sequences. A sequence is a set of actions to be taken in a specific order and with a specified delay time between each step. (SQUID only)
- Triggers:** Configure the automatic control of outlets based on three event types: AutoPing, Thresholds, and Scheduled. (SQUID only)

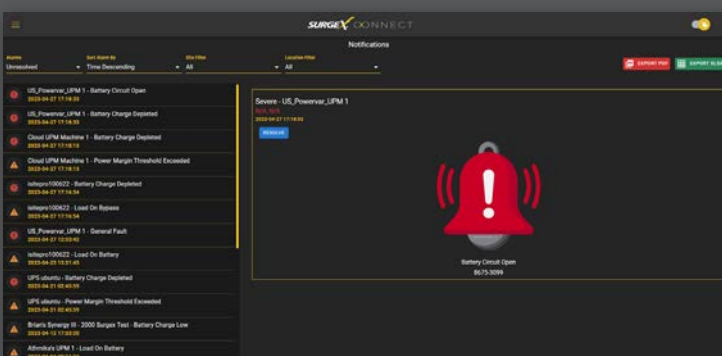
## Power Management

Turn on, off, and reset individual outlets/banks, mute Audible Alarms (UPS only), set up outlet sequences, and trigger events. (SQUID only)



## Alerts and Notifications

Notification screen to review alerts from your fleet of devices in one place. Set up triggered notification emails to send critical, warning, and event updates. Each device also has its own alert list (not pictured), which can be reviewed.



## Security

- Host:** Amazon Web Services (AWS); Transfer Protocols: HTTPS, MQTT, and WebSockets; Authentication Certificate: X.509; Encryption Algorithm: AES-256; Role-Based Access Control (RBAC); Certificate Rotation
- Compatibility:** Compatible with SQUID, UPS Standalone, and new Protect + Connect products (coming soon).

# SURGEX<sup>®</sup> ∞CONNECT

Compatible with SQUID, UPS Standalone, and new  
**Protect + Connect** products – *coming soon!*

PROTECT + ∞CONNECT



Get started today – *easy as 1-2-3!*

1

Create an account at  
**SurgeXConnect.com**



2

Update your devices with the  
latest firmware via **SurgeX.com**



3

Navigate to cloud settings on your  
device and sign in to **SurgeX Connect**

